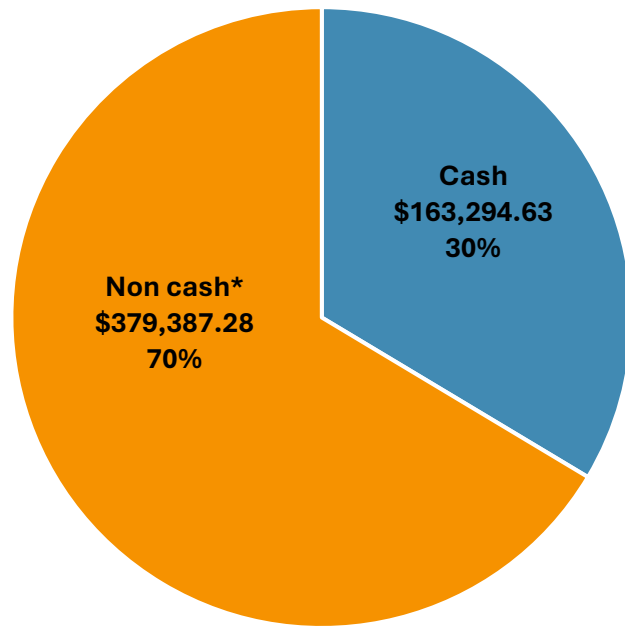


2025 Financial Summary



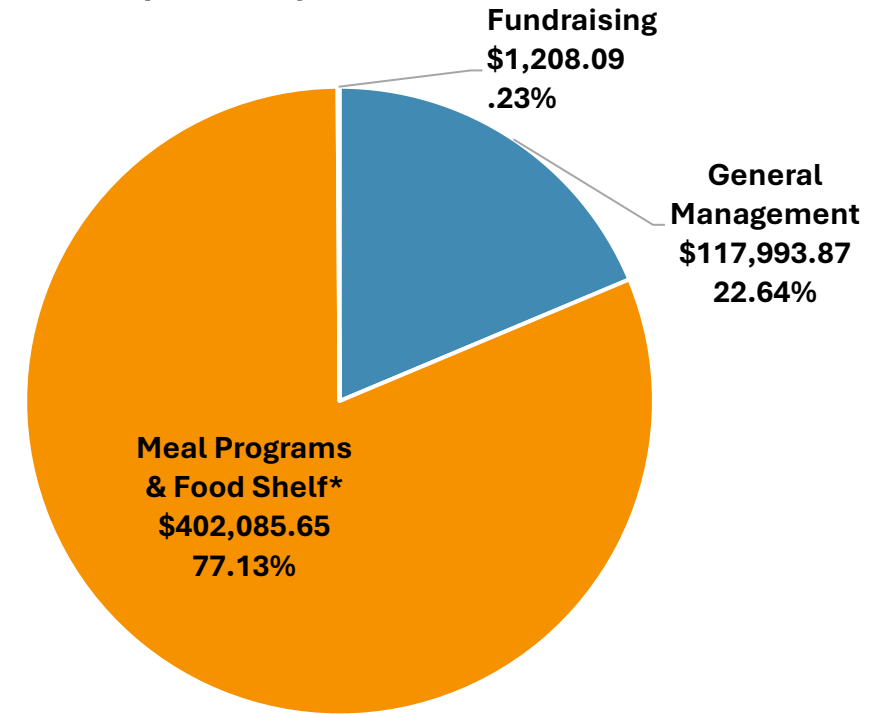
Freely we receive, Freely we give

Revenue by Type



*Meal Program & Food Shelf In-kind Donations

Expenses by Functional Use



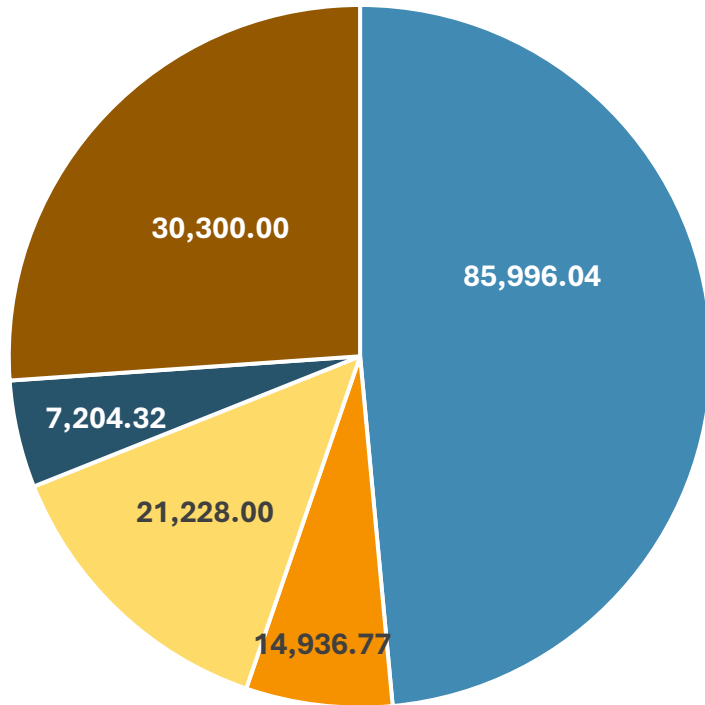
*Consists of Meals Provided and Distribution of Goods Received

Cash Revenue Sources

January 1 – December 31, 2025



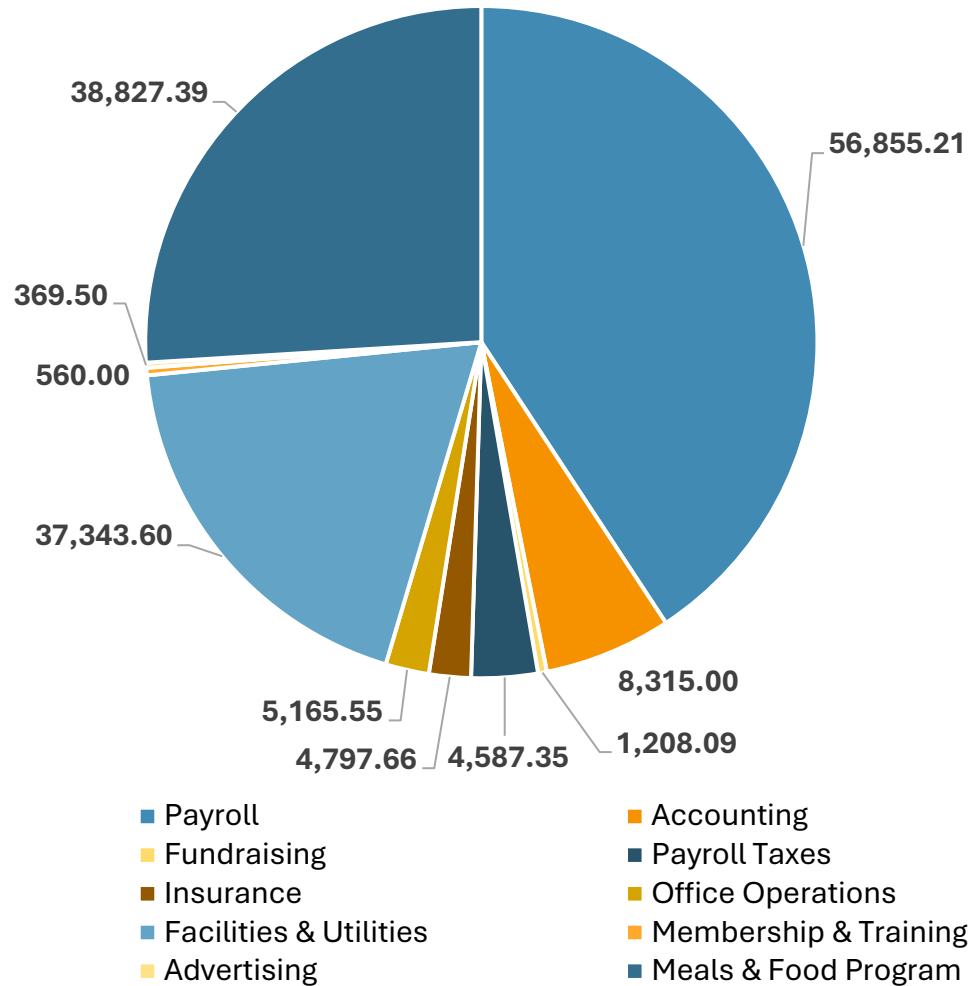
Freely we receive, Freely we give



Cash Revenue
\$159,665.13

- Individual contributions
- Church contributions
- Non profit contributions
- Corporate Contributions
- Grants

Cash Expenditures January 1 – December 31, 2025



Freely we receive, Freely we give

**Expenses & Purchases
\$158,029.35**